

# Eltham Arts Winter Festival What's On

## Saturday October 31

**Opening Bell ringing.** The Eltham Bell Ringers will ring in the Festival from the bell tower in the centre of Eltham. St John's Church. 11

**Festival Opening Day** Passey Place. Music, kids activities and find out what's going on. Cast of Wizard of Oz will be there. Come and meet us! FREE. 11-3

**Halloween biscuit decorating for toddlers.** Special menu. All about Taste Café. 9.30-12

**Halloween Spectacular** with Friends of Avery Hill Park. Kids' activities, spooky goings-on and other ghoulish delights! FREE www.face-book.com/Avery Hill Park Cafe. Avery Hill Park Cafe. 3-5

**Halloween Party for kids.** Come and be spooked! £3 per child. Eltham Park South Café. 6

**Halloween Event.** Special opening after dark and Haunting Music concert. Info www.severndroogcastle.org.uk. Severndroog Castle

**Halloween fun and activities for Un's.** Must be accompanied by an adult. Tickets £5 on the door. Info www.progressestate.blogspot.co.uk. Progress Hall. 4-6

**Real Ale Festival.** Eltham GPO. 12

**Murder Mystery Night.** Info 020 8850 9685. Eltham GPO. FREE. 6-8.30

**Live poetry.** Eltham Roving Poets. Various locations.

## Sunday November 1

**Art Exhibition** Tudor Barn. Hotchpotch 2 Art Exhibition. FREE Info baileyhogg123@hotmail.co.uk. 10-6

**Autumn Art Exhibition** Lewisham Society of Arts Capital Art Gallery (till Sunday Nov 28) 10-4.

**Eltham Palace Open Day.** Tickets half price RBG Residents. 10-4

**Music & Open Mic.** Eltham GPO. Anyone can play. Info 020 8850 9685. From 8

## Monday 2 November

**Craft.** Three-week project to make a Festival Tree with different media and for different ages. Eltham Centre Library. Info 020 8921 3452

**Messy Time.** Children under 5 and carers FREE. 10-11

**Craft Club.** Children Un1 FREE at 3.45-4.45

**Talk "I married a Vicar"** by Romy McCabe. CANE (Community Association of New Eltham).£2.50 Info: 020 8850 7122 www.cane-seg.co.uk. 2-3.30

**Life Drawing Workshop.** Gerald Moore Gallery. Book place online www.geraldmooregallery.org. 7-9

**Quiz Lighthearted Quiz Night for Eltham Arts.** Max 4 per team. £5 per person. The Long Pond. 7

**Live poetry.** Eltham Roving Poets.Various locations through day.

## Tuesday 3 November

**Festival Rhyme Time for under 5s.** Eltham Centre Library. Info: 020 8921 3452 FREE

**Craft & Knitting.** Eltham Centre Library. Join a creative group for this three week project to Make a Festival Tree with different media and for different ages. Info: 020 8921 3452. Knit and Natter Adults FREE. 2-4

## Art Exhibition & Elevenses.

CANE (Community Association of New Eltham). Tea and Piccies. FREE entry. Info: 020 8850 7122 www.cane-seg.co.uk. 10.30-1

**Introduction to traditional stories and storytelling.** Storytelling in Hope invite you to A Feast of Stories. Age 12+ to adult. St Mary's Centre. Info www.storytellinginhope.com. 020 8699 0675 FREE.8-10pm

## Wednesday 4 Nov

**Foraging Walk.** Eltham Park South. Edible Tree Foraging Walk led by Kevin Godby around the park paths and local streets. Meet at the park café. FREE. 10.30

**Art & Costume exhibition.** Bob Hope Theatre display including beautiful watercolour posters and costume designs from the Eltham Little Theatre archives. FREE. 10-12.30

**Talk. Green Chain in the Eltham Area** by Mark Budd, Green Chain Project Officer. Eltham Centre Library. Info 020 8921 3452. FREE. 2-3

**FolkMob Open Mic.** Club at Well Hall. Bar, parking, disabled access. FREE. Info: www.folkmobonline.co.uk. 8.30-11pm.

**Festival Quiz Night & Carvery.** The White Hart. Quiz Night for Eltham Arts with Carvery from 6.30, Quiz at 8. £10 Advance booking recommended 020 8850 1562.

## Thursday 5 November

**Pop Up Art Café.** The Tarn Park. FREE. 11-2

**Fireworks Day** Special Crafts and menu. All About Taste café. 9.30-12noon

**Art Exhibition & Elevenses.** CANE. Tea and Piccies. FREE (see 3 Nov). 10.30-1

**Craft & Knitting.** New Eltham Library. Make a Festival Tree. Join the Knit and Natter group. FREE. Info: 020 8850 2322. 2 to 4

**Jazz and Swing Evening.** Eltham Warren Golf Club. £9 (£5 members). 8-10.30

**An evening of easy jazz:** Small Swing Band. Avery Hill Mansion House. University of Greenwich, Student and Staff Common room. Band Leader Fred Parrett FREE. 8.

**Quiz.** Eltham GPO. £2 Max 6 per team Info: Info : 020 8850 9685. @EltGPO. 8

**Beer Festival.** The Long Pond. Best of SE London's Independent Breweries. Up to 10 beers a day. Pub opening hours. Info: 020 8331 6767. @thelongpond

## Friday 6 November

**Festival Rhyme Time** for under 5's. Eltham Centre Library. Info: 020 8921 3452 FREE

**Craft.** Eltham Centre Library. Join a creative group for this three week project to Make a Festival Tree with different media and for different ages. Info: 020 8921 3452.

**Talking Theatre.** Progress Hall. WW1 Forgotten Voices production by the Priory Players. £8/£7 Tickets 07502 450983 or email tickets@prioryplayers.com. 7.45

**Postcard Art.** Gerald Moore Gallery. Secretly Yours: The Third Annual Secret Postcard Sale. Original postcard-sized artworks by internationally acclaimed artists for £20. Info: www.geraldmooregallery.org

FREE. 4-8

**Talk: An Artist at Work.** Meet George Fanshawe. CANE. 020 8850 7122 www.cane-seg.co.uk FREE. 10-2

**Beer Festival.** The Long Pond. Info: 020 8331 6767

## Saturday 7 November

**Art Exhibition. SE9 Container Gallery.** The Organic World: Mosaic Wall Panels. FREE. www.se9containergallery.wordpress.com/. 11-3

**ART. Ten South London Women's Art Group** exhibition. Gerald Moore Gallery. Info: www.geraldmooregallery.org and www.southlondonwomenartists.co.uk FREE. 12-4

**Art Exhibition. Bob Hope Theatre.** Posters and costume designs from the archives. FREE. 10-12.30

**Tour of Avery Hill Mansion House** and exhibition. By Dr Will Robley (University of Greenwich). Meet at the Mansion House door. FREE. 2

**Beer Festival.** The Long Pond Info: 020 8331 6767

**Live poetry.** Eltham Roving Poets. Various locations through day.

## Sunday 8 November

**Eltham Palace Open Day.** Tickets half price RBG Residents. 10-4

**Arts and Crafts Fair.** Severndroog Castle. Info: www.severndroogcastle.org.uk. 10.30-4.30

**Remembrance Day Parade.** Eltham High St to St John's Church. 11

**Literary Walk. Edith Nesbit Walk** by Greenwich Get Walking. Well Hall Pleasaunce. Meet at park gate opposite Co-op. Info: 07972 668657. 2.30-4

**Beer Festival.** The Long Pond. 020 8331 6767

**Music & Open Mic.** Eltham GPO. Anyone can play! Info : 020 8850 9685. FREE. 8

## Monday 9 November

**Craft.** Eltham Centre Library. Make a Festival Tree.

**Life Drawing Workshop.** Gerald Moore Gallery. Book atgeraldmooregallery.org. 7-9

**Folk and Blues.** Bob Hope Theatre Bar. An Open Mic

evening hosted by the Grizzly Mutts Country/Rock duo. Come and enjoy the live music or provide some of your own. Bar open throughout. £2. From 7.30

## Tuesday 10 November

**Festival Rhyme Time** for U5's. Eltham Centre Library. Info: 020 8921 3452 FREE

**Craft & Knitting.** Eltham Centre Library. Make a Festival Tree. Knit and Natter Adults.

**Art Exhibition & Elevenses.** CANE. Tea and Piccies. FREE. 10.30-1

**Traditional Pub Singalong** around a vintage piano. The Long Pond. Info: 020 8331 6767 FREE. 7.30

## Wednesday 11 Nov

**Theatre: Liola by Luigi Pirandello.** Bob Hope Theatre. Version by Tanya Ronder directed by Jennifer Sims. Live music, song and dance - a big hit at the National Theatre in 2013. www.bobhopetheatre.co.uk. 7.45

**Art & Costume exhibition.** Bob Hope Theatre. FREE. 10-12.30

**Armistice Day Tea Dance.** Eltham Park Baptist Church. Food and live music. Info: RevPaul@epbc.org.uk. 4-6

**FolkMob Singaround.** Club at Well Hall. www.folkmobonline.co.uk FREE. 8.30-11

## Thursday 12 November

**Art Exhibition & Elevenses.** CANE. FREE (see 3 Nov). 10.30-1

**Knitting Make a Festival Tree.** New Eltham Library. FREE. 2 to 4

**Talk: Girl Guides in the British World.** By Dr Mary Clare Martin of University of Greenwich. Eltham Centre Library. Info: 020 8921 3452 FREE. 2-3.30pm

**Quiz night.** Eltham GPO. £2 Max 6 per team. Info : 020 8850 9685. @EltGPO. 8

**Theatre: Liola.** Bob Hope Theatre (see 11 Nov) 7.45

**Choral Singing.** Eltham Choral Society, in partnership with the Eltham Park Residents' Association, presents an OPEN REHEARSAL for its festive concert at Eltham Park Methodist Church. Just listen

or join in part of the rehearsal. FREE. 7.30-9.30.

## Friday 13 November

**Festival Rhyme Time** for U5's. Eltham Centre Library. Info: 020 8921 3452 FREE

Eltham Centre Library. Make a Festival Tree - See 6th November for details FREE

**Police Open Day** at Eltham Police Station. Kids activities. Meet police team. FREE. 1-6

**Theatre: Liola.** Bob Hope Theatre 7.45

## Saturday 14 November

**Art & Costume exhibition.** Bob Hope Theatre. FREE. 10-12.30

**ART Open Studio Sylvia Stevens.** 52 Glenhouse Rd, Eltham SE9 1JQ. Art and Ceramics FREE. 10-4

**Workshop: An Introduction to mixed media mosaics.** SE9 Container Gallery. Limited to 12 people £30. Info: gallery@stmcomprehensive.org. 12-3

**ART Ten South London Women's Art Group.** Gerald Moore Gallery. FREE. 12-4

**Creative Crafternoon.** Gerald Moore Gallery. Get crafty with expert help from experienced local crafters. All ages. Info: www.geraldmooregallery.org. FREE. 2-4

**Ghost Hunt with Spooksavers.** Severndroog Castle. £4.5 per ticket only 30 tickets available. Paranormal investigation. Info: www.severndroogcastle.org.uk. 8pm-4am.

**Theatre: Liola.** Bob Hope Theatre 7.45

**Live poetry.** Eltham Roving Poets.Various locations through day.

## Sunday 15 November

**Eltham Palace Open Day.** Tickets half price RBG Residents. 10-4

**ART Open Studio Sylvia Stevens.** 52 Glenhouse Rd, Eltham SE9 1JQ. Art and Ceramics FREE. 10-4

**Music and Open Mic.** Eltham GPO. 020 8850 9685. FREE. 8

## Monday 16 November

**Make a Festival Tree.** Eltham Centre Library - See 2 Nov for details. FREE

**Photo and Sketch Walk.** Greenwich Get Walking. Meet at Eltham Park cafe. Bring a camera/sketch pad. FREE sketch pad if you book ahead. Call Ollie: 07972 668657. 2-3

**ART Life Drawing Workshop.** Gerald Moore Gallery. Book geraldmooregallery.org. 7-9

## Tuesday 17 November

**Festival Rhyme Time** for U5's. Eltham Centre Library. Info: 020 8921 3452 FREE

**Craft Make a Festival Tree** Eltham Centre Library FREE

**Art Exhibition & Elevenses.** CANE. FREE. 10.30-1

**Art in the Afternoon. Harris Academy Greenwich.** Key stage 3 students showcase work created in drama and music lessons. FREE. 4.30-6

**Acoustic Guitar Night:** Tony Martin Unplugged. Long Pond. Info: 020 8331 6767 FREE. 7.30

## Wednesday 18 Nov

**Art & Costume exhibition.** Bob Hope Theatre. FREE. 10-12.30

**FolkMob Festival Special.** Club at Well Hall. Info: www.folkmobonline.co.uk FREE.

8.30-11

**Charity Quiz Night and Carvery.** White Hart. £10 Advance booking essential 020 8850 1562. Carvery 6.30, Quiz 8

## Thursday 19 November

**Art Exhibition & Elevenses.** CANE. FREE (see 3 Nov). 10.30-1

**Craft Make a Festival Tree.** New Eltham Library. 2 to 4pm FREE

**XMAS Eltham Lights Up Lantern Parade and Xmas Lights.** Eltham High Street, organised by Royal Greenwich www.royalgreenwich.gov.uk FREE. 4-7

**Quiz night. Eltham GPO.** £2 Max 6 per team Info: 020 8850 9685. @EltGPO. 8

**Theatre: Wizard of Oz.** Bob Hope Theatre. Join Dorothy and her friends on their magical journey. Hulviz Amateur Musical Society. Tickets : www.bobhopetheatre.co.uk or White Hart. 7.30

**Blues Night: Carlos and the Jackals.** The Long Pond. Info: 020 8331 6767 FREE. 8

## Friday 20 November

**Festival Rhyme Time** for under 5's. Eltham Centre Library. Info: 020 8921 3452 FREE

**Craft. Make a Festival Tree.** Eltham Centre Library. FREE

**Theatre: Wizard of Oz.** Bob Hope Theatre 7.30

## Saturday 21 November

**Art & Costume exhibition.** Bob Hope Theatre. FREE. 10-12.30

**Walking Tour. History of St Luke's Church.** FREE. Paid refreshments. 10.30 & 11.30

**Exhibition: Old Eltham by the Eltham Society.** Eltham CofE School. Info: theelthamsociety.org.uk FREE. 10.30-5.30

**Exhibition of Mosaics.** SE9 Container Gallery. FREE 11-3

**ART Ten.** South London Women's Art Group. Gerald Moore Gallery. FREE (See 7 Nov). 12-4

**Gaming: Retro Day.** Music & Retro gaming. Eltham GPO. Info : 020 8850 9685 FREE. 12noon onwards.

**Theatre: Wizard of Oz.** Bob Hope Theatre (see Nov 19) 7.30

**Live poetry.** Eltham Roving Poets.Various locations through day.

## Sunday 22 November

**Eltham Palace Open Day.** Tickets half price RBG Residents. 10-4

**Art and Ceramics Open House.** 52 Glenhouse Rd SE9 1JQ. FREE. 10-4

**ART Drawing Life and Diary Comics.** With Matilda Tristram, children's writer, animator and lecturer. Gerald Moore Gallery. £50. Book: geraldmooregallery.org. 10-4

**Music & Open Mic.** Eltham GPO. Info: 020 8850 9685 FREE. 8

**Festival Finale Day.** Eltham Arts and The White Hart invite everyone to come along. The White Hart. **Children's event.** Punch and Judy and Children's Painting Competition FREE. 10-12noon

**Family Sunday lunch.** 10% discount for families attending kids event. Book a table 020 8850 1562. 12-7. **Music**

**Open Mic** and the **Eltham Roving Poets** FREE. 7.30.



**Great Jazz and Swing**

**Thursday Nights**

**ELTHAM WARREN GOLF CLUB**

Bexley Road, Eltham SE9 2PE

Tel: 020 8850 4477

*Featuring Top Guest Artists*

with

*The Hugh Ockendon Trio*

**05 Nov. Steve Waterman - Trumpet, Martin Speake - Sax**

**19 Nov. Roger Beaujolais - Vibes**

**03 Dec. Jim Mullen - Guitar, Stan Sulzman - Sax**

**17 Dec. Christmas Special - Ticket only**

**Featuring - Digby Fairweather**

**14 Jan. Simon Spillett - Tenor Sax**

**28 Jan. Derek Nash - Saxes**

Music 8pm - 10.30pm

Tickets £9 (Golf Club Members £5)

marionockendon@sky.com

Marion 07752 393228

We reserve the right to alter/amend any of the above without prior notice

Events are organised by partners in the community and may be subject to change. Please check website [www.elthamarts.org](http://www.elthamarts.org) and Twitter @ElthamArts. Book an ad in our coverage next month - email [Matt@TheGreenwichVisitor.com](mailto:Matt@TheGreenwichVisitor.com)



# ELTHAM ARTS

October 31 to November 22 2015 Greenwich Visitor pull-out guide

## Winter Festival

### SHOW'S FURRY TALE ENDING

THIS adorable little dog has landed a starring role on stage...after being found as a stray on the streets of Eltham.

Yorkshire Terrier Mia was rescued by a resident who knew the Hulviz Amateur Musical Society were looking for a dog to play Toto and thought she would be perfect for the part.

The rescuer contacted Hulviz and - after bumping into the owner as they posting "Missing" notices - put them in touch with each other...and a star was born.

The magical family musical tells the story of Dorothy and her friends the Scarecrow, the Tinman and the Lion. It's packed with classic songs people of all ages will know, like Somewhere Over The Rainbow, Ding Dong The Witch is Dead and The Merry Old Land of Oz. It's at the Bob Hope Theatre in Eltham from November 19 to 21. Hulviz is celebrating 85 years of performing - making the Wizard of Oz an extra-special show.



PET PROJECT:  
Rehearsals for The  
Wizard of Oz with  
Mia (main pic)  
as Toto



**EVERY  
EVENT  
LISTED**  
LISTINGS INSIDE



### Show Time

Liola at Bob Hope Theatre  
- See Listings P4

**EVENT  
MAP  
INSIDE**  
CENTRE PAGES

## First Festival is here!



ROVING: MP Clive Efford

THE stage is set and the curtains are now open on the first Eltham Arts Winter Festival!

The opening event on October 31 kicked off three weeks of eclectic arts events all over SE9. Enjoy the huge number of creative arts activities and inspiring events on offer by artists and community groups - from music, crafting, theatre and live poetry to bracing walks and chilled beer festivals, **writes REEVA CHARLES.**

Have a look at the full programme and

map in this issue of Greenwich Visitor and get planning. Don't forget to take in the Arts Trail and call in at some of the venues. Eltham Arts, the voluntary community organisation organising this first ever Festival in Eltham, is thrilled by the number of groups and individuals taking part - and delighted by the spirit of co-operation and sense of community the Festival has highlighted.

Eltham MP Clive Efford - who is taking part in some Festival live poetry - has been equally impressed. He said: "The

Eltham Arts Winter Festival is a fantastic opportunity to show off just how creative people are here in Eltham. There really is something for everyone. I am particularly looking forwards to my role as one of the Roving Poets. Congratulations to Eltham Arts for working so hard to bring this wonderful festival to Eltham."

For updates, news and any unavoidable programme changes, check the website [www.elthamarts.org](http://www.elthamarts.org) and twitter [@ElthamArts](https://twitter.com/ElthamArts) with the special Festival hashtag [#ElthamWinFest](https://twitter.com/ElthamWinFest).



### Story Time

Storytelling In Hope  
- See P2 & Listings P4

Learn to make your own  
**MIXED MEDIA MOSAIC**  
with the artist **ALiYaHGATOR**

All materials provided but  
please bring your own apron

**Saturday November 14th**  
12-3 | Price £30

**SE9 Container Gallery**  
St Thomas More Catholic School,  
Eltham, London SE9 2SU

**Booking Essential: Call 020 8850 6700 Extension 252**

The Club at Well Hall, Kidbrooke Lane, Eltham SE9 6TE.

**Folk  
MOB**

Every Wednesday 8.30pm - 11pm.  
All sessions £1 inc free raffle ticket.

Open mic session first Wednesday  
of the month. Singaround session  
other Wednesdays. Theme nights  
held on some Singaround sessions.

All welcome - come along  
and perform or just listen.

Visit our website to find out more:

[www.folkmobonline.co.uk](http://www.folkmobonline.co.uk)

### Storytelling in Hope

Where stories come to life

**June Peters: Sugar Skulls & Love Spoons**

Tales of memory and identity; love and knitting.

Sat 14th Nov 7.30 pm,

Bakehouse Theatre, Blackheath SE3 9LA, 12 yrs + £7

**Story Sharing Circle**, Tues Weekly 8-10 pm

St Mary's Community Centre, Eltham SE9 1BJ

[www.storytellinginhope.com](http://www.storytellinginhope.com)

020 8699 0675



# ART SHOWS ARE BLAZING A TRAIL

THIS year there's a Festival first – an Art Trail, underpinned by three great galleries.

The innovative **SE9 Container Gallery**, the **Gerald Moore Gallery** in Mottingham and the **Capital Art Gallery** in Well Hall have exhibitions. Two other standing exhibitions will be at the **Bob Hope Theatre** and at **CANE** in New Eltham. And there are other venues down Eltham High Street – from cafes to hairdressers.

Ten members of the innovative **South London Women Artists** group take the space at the Gerald Moore with a show called Ten. The show launches on November 7 with a fund-raiser alongside – small works on paper will be sold and the proceeds will be donated to the **Stephen Lawrence Foundation** and **Eltham College**. The Gerald Moore Gallery – in the grounds of Eltham College – is open to the public on Saturdays 12-4 pm and other times by appointment tel: 0208 857 0448

As well as an art exhibition, the SE9 Container Gallery – housed in containers on the St Thomas More School site – is running a trial mosaic-making session. Info: [www.se9containergallery.wordpress.com/](http://www.se9containergallery.wordpress.com/)

**Eltham Palace** is also on the Art Trail and is



offering half price entry on Sundays during the Festival. **CANE** (Community Association New Eltham) hosts a number of events for the Festival with a focus on art. Manager Sue Killick says: "We have three boards where we can show work and a professional artist living in our midst who comes along to our annual craft fair in October."

"Our Monday University of the Third Age groups are art classes who also display and sell their work. We hope people will come along to our coffee shop to enjoy our hospitality and see the work of George Fanshawe and our U3A artists."

Art Trail organiser John Wingham said: "This is the first time we've done anything like this in Eltham. We have far more artists taking part than I thought possible and lots in interest from businesses and the community."

"Although I trained as a graphic designer my career developed in different ways. I have found that putting this Art Trail together has inspired me to start painting again."

Check out opening times for the Art Trail venues on the Eltham Arts website at [www.elthamarts.org](http://www.elthamarts.org). And don't forget to follow us on [www.facebook.com/ElthamArt](http://www.facebook.com/ElthamArt)

## White 'art family finale

THE Festival Finale at the White Hart in Eltham on November 22 promises to be a fabulous fun-packed family day.

From 10am till noon there are free kids activities, a puppet show and a painting competition, followed by a family Sunday lunch from 12-7 (book: 020 8850 1562). The White Hart is offering 10 per cent off if children have taken part in the morning activities.

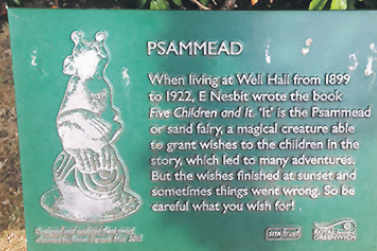
Live music starts from 7.30pm including entrants in the Winter Song Challenge and as local musicians, it will be a great evening.

## Hear some telling tales

STORYTELLING in Hope is playing a big part in the Festival. The friendly group – 22 years old – is dedicated to hearing and telling stories from around the world. It meets each Tuesday at St Mary's Community Centre, Eltham. And each month it holds a public performance, often at the Bakehouse Theatre, Blackheath. It also takes storytelling into care homes and hospitals. On Sat Nov 14, at the Bakehouse, June Peters tells of Sugar Skulls and Love Spoons – about memory, death, rebirth, love and knitting. Tickets are £7.

Info: [www.storytellinginhope.com](http://www.storytellinginhope.com)

## Walk in E's footsteps



**AUTHOR** Edith Nesbit lived in Well Hall, Eltham from 1899 to 1921 and wrote many of her most well-known books here – including classics like *The Railway Children* and *Five Children and It*.

Greenwich Get Active, which organises regular walks here, is holding a special Literary Walk around Well Hall for the Festival on Sunday November 8 starting at the Well Hall Pleasaunce gates opposite the Co-operative store at 2.30pm. All ages are invited.

The walk stops at key points in the park and streets. Walkers can stop and read extracts from E Nesbit's books and poems.



What a great way to have some exercise, enjoy literature and learn some gems about the area's history.

## Get a pic of the action?

THE Winter Festival's colourful events and creative activities are a perfect opportunity to capture some great visual images. We're looking for your finest photographs and movie footage which tell a story or catch the flavour of the moment.

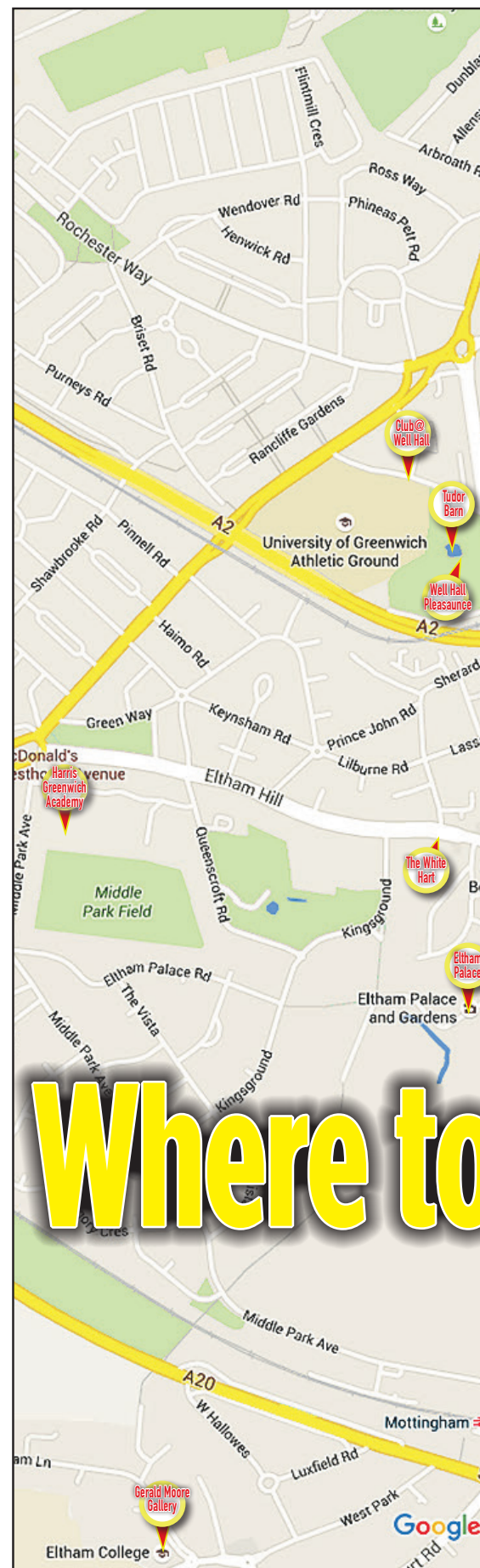
You can send them into our Festival Picture It project. Upload them to the Eltham Arts Facebook page, saying when and where they were taken; post them on twitter @ElthamArts with the hashtag #ElthamWinFestPic or email them to [elthamarts@aol.co.uk](mailto:elthamarts@aol.co.uk). There may even be prizes and we will certainly publish lots as a celebration. Do join in!

## Folk heroes for 20 years

NEVER been to a folk club? FolkMob has been running in Eltham for over 20 years and now meets every Wednesday from 8.15 to 11pm at the ClubeWellHall, on Kidbrooke Lane. The standard of playing is excellent and there are three special nights that Folkmob



Eltham have organised for the Festival – on November 4, 11 and 18. You can sing, play or just listen. There's free entry during the Festival.



# Where to

**The White Hart Pub  
Carvery & Steakhouse  
2 Eltham High Street  
SE9 1DA**

**0208 850 1562**



**Now taking bookings for Christmas meals throughout December.**

**FREE BOTTLE OF WINE**

for every table of 4 booked from now until Christmas (excluding Sundays and Christmas Day).

Offer can be withdrawn at any time.

**VALID ONLY WITH THIS VOUCHER**

[www.whiteharteltham.co.uk](http://www.whiteharteltham.co.uk)

### Eltham Arts Winter Festival event venues

- Avery Hill Park Cafe**, Bexley Road SE9 2PQ
- Avery Hill Mansion House**, Bexley Road, SE9 2PQ
- Beyond the Fringe**, 205 Eltham High St SE9 1TS
- Biscotti's**, 5 Pound Place, SE9 5DN
- Bob Hope Theatre**, Wythfield Road SE9 5GT
- CANE and New Eltham Library**, SE9 3QT
- Capital Art Gallery**, 13 Well Hall Parade, SE9 6SP
- ClubeWell Hall**, Kidbrooke Lane, SE9 6TE
- Davis Framers**, 9 The Arcade, SE9 1BE
- Demelza**, 211 Eltham High St, SE9 1TX
- Eltham Centre Library**, 2 Archery Rd, SE9 1HA
- Eltham C of E School**, Roper St, SE9 1TR
- Eltham Palace**, Court Yard, SE9 5QE
- Eltham Park Baptist Church**, Glenure Road SE9 1JE
- Eltham Park Methodist Church**, Westmount Road SE9 1XX
- Eltham Park South Cafe**, Glenesk Road SE9 1AG
- Eltham Police Station**, 20 Well Hall Road SE9 6SF
- Eltham Warren Golf Club**, Bexley Rd SE9 2PE
- Gerald Moore Gallery**, Mottingham Lane SE9 4RW

Please check the website [www.elthamarts.org](http://www.elthamarts.org) for the Winter Festival. Advertise your event in



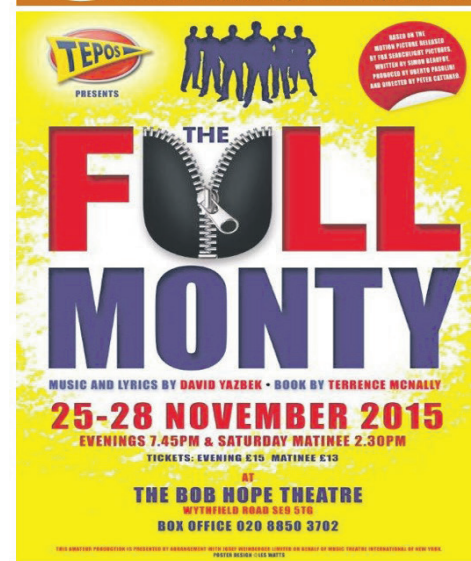
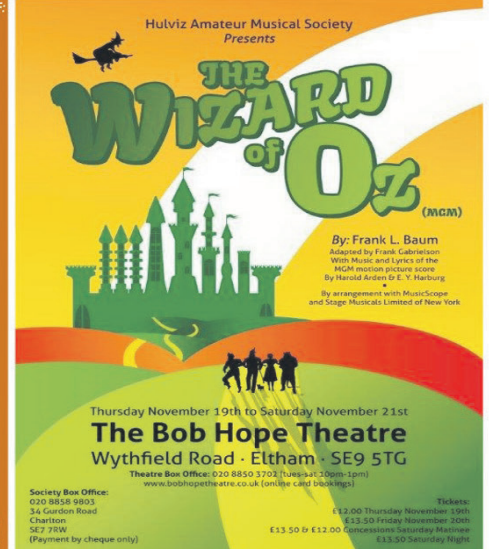
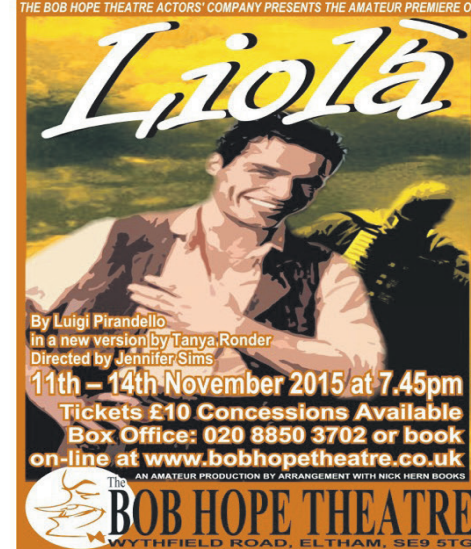


**Halifax**, 165-169 Eltham High Street, SE9 1TT  
**Harris Academy Greenwich**, Middle Pr Av SE9 5EQ  
**It's All about Taste** 14 Well Hall Parade SE9 6SP  
**Normans Music**, 32 Well Hall Road, SE9 6SF  
**Passey Place**, Eltham High Street, SE9 5DQ  
**Progress Hall**, Admiral Seymour Road, SE9 1SL  
**SE9 Container Gallery**, St Thomas More RC School, SE9 2SU  
**Severndroog Castle**, Castle Wood, SE18 3RT  
**Shoe Care**, 196 Eltham High St, SE9 1BJ  
**St John's Church**, Eltham High Street SE9 1DH  
**St Luke's Church**, Westmount Road SE9 1XQ  
**St Mary's Centre**, 180 Eltham High Street SE9 1BJ  
**Sylvia Stevens Open Studio**, 52 Glenhouse Road SE9 1JQ  
**The Eltham GPO**, 4 Passey Place, SE9 5DQ  
**The Long Pond**, Westmount Road SE9 1UT.  
**The Tarn**, Court Road SE9 5AQ  
**The White Hart**, 2 Eltham High Street SE9 1DA  
**Well Hall Pleasaunce/Tudor Barn**, Well Hall Road, SE9 6SZ

**Woodnut Cafe**, 116 Westmount Road, SE9 1UT  
**Art Trail Venues & Opening Times**  
**Bob Hope Theatre**: Wed & Sat 10-12.30 (see events)  
**Biscotti's**: Cafe opening hours  
**Beyond the Fringe** SE9 1TS. Shop opening hours  
**CANE** SE9: Tues and Thu (see events)  
**Capital Art Gallery**: Mon to Sat 10-5pm  
**Davis Framers**: Shop window  
**Demelza**: shop window  
**Eltham Centre Library**: Library opening hours  
**Eltham Palace**: Sundays 10-4pm.  
**Gerald Moore Gallery**: Saturdays (see events)  
**Halifax Plc**: Shop window  
**Normans Music**: Shop window  
**SE9 Container Gallery**: Sats 11-3pm (see events)  
**Shoe Care**: Shop window  
**Sylvia Stevens**: Sun 15 & Sun 22 Nov 10-4pm  
**Tudor Barn**: Hotchpotch Exhibition Sun 1 Nov  
**White Hart**: Pub opening hours  
**Woodnut Cafe**: Cafe opening hours

hamarts.org and Twitter @ElthamArts for updates to events during the November - email Matt@TheGreenwichVisitor.com or call 07731 645828

**The BOB HOPE THEATRE** Box Office: 020 8850 3702  
 or for more details or  
 to book online at  
 www.bobhopetheatre.co.uk  
 ★ WYTHFIELD ROAD, ELTHAM, SE9 5TG



*it's all about*  
**TASTE**  
 COFFEE • FOOD • DELI

- Gourmet Caravan Coffee
- Paul Rhodes cakes, pastries and bread
- Delicious breakfasts, panini, wraps, baguettes & salads
- Gifts, greeting cards & wrap
- Friendly staff. Great ambience & atmosphere
- The place to meet friends



14 Well Hall Parade, Eltham SE9 6SP. 0208 294 2141  
 Mon-Fri 8.30am-3.30pm. Sat 9am-3pm